

Sunesta[®] 

AWNINGS & OUTDOOR COMFORT

FABRIC COLLECTION

VALANCE STYLE & BINDING COLORS

*NOTE: These colors are representations. The actual binding color may vary.

#5 Straight with Hem



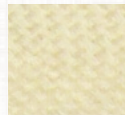
#4 Straight with Binding



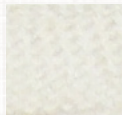
#2 Low Wave



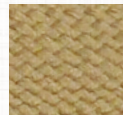
Linen
322096



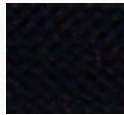
Cream
322095



White
322035



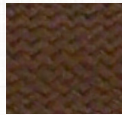
Beige
322033



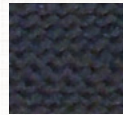
Black
322021



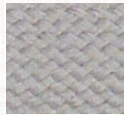
Dark Brown
322042



Cocoa
322106



Steel
322107



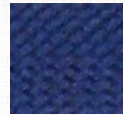
Grey
322027



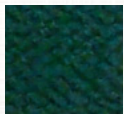
Pacific Blue
322025



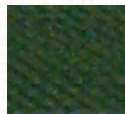
Navy Blue
322037



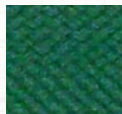
Bright Sapphire
322101



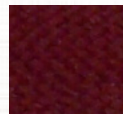
Forest Green
322038



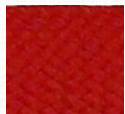
Olive
322104



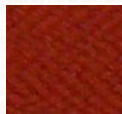
True Green
322103



Burgundy
322004



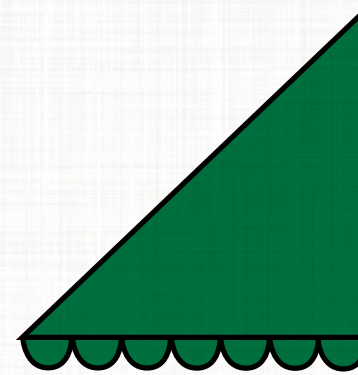
Red
322012



Terra Cotta
322017

SUNBRERO PVC COLOR SELECTION CHART

*NOTE: These colors are representations. The actual cover strip color may vary.



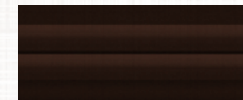
WHITE
405046



GREY
405058



BLACK
405047



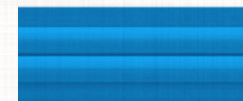
BROWN
405048



NAVY BLUE
405056



GREEN
405050



SKY BLUE
405057



CREAM
405049



MAROON
405055



CLAY
405060

BROWN FABRIC COLLECTION



314325



323052



314020



320930



323113



338771



323051



323149



338770



320963



320992



314403



314917



314016



323098



338639



323096



320715



320903



323035



323097



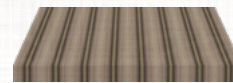
320701



338640



364056



320721



320441



323065



323034

GRAY FABRIC COLLECTION



314910



314030



323150



320965



314028



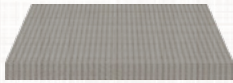
320993



320923



320937



338621



385910



338772



338773



314398



314402



314154



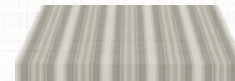
338623



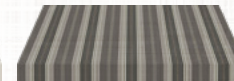
323069



315105



320835



320823



320886



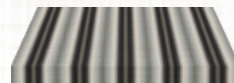
323093



320958



323095



320493



320838



323112



320734



315352



338655



320888



320830

BLUE FABRIC COLLECTION



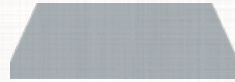
323014



314011



323107



314858



338776



314153



320560



323057



323055



320409



320190



320556



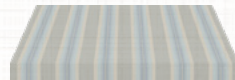
320584



323058



323119



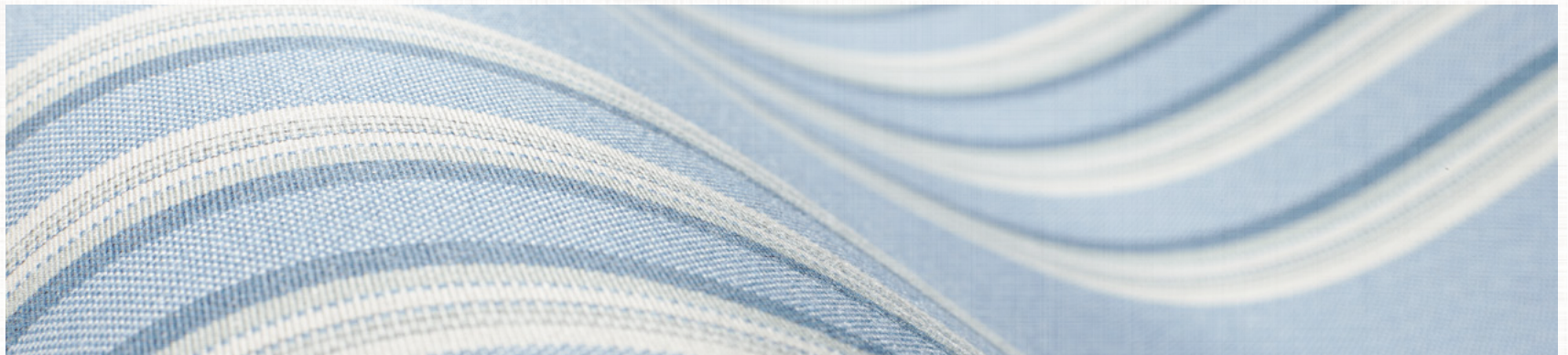
320573



364051



320559



GREEN FABRIC COLLECTION



314362



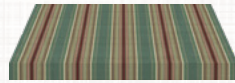
323151



338775



338625



320914



364203



320671



320253



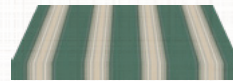
364598



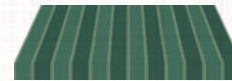
323005



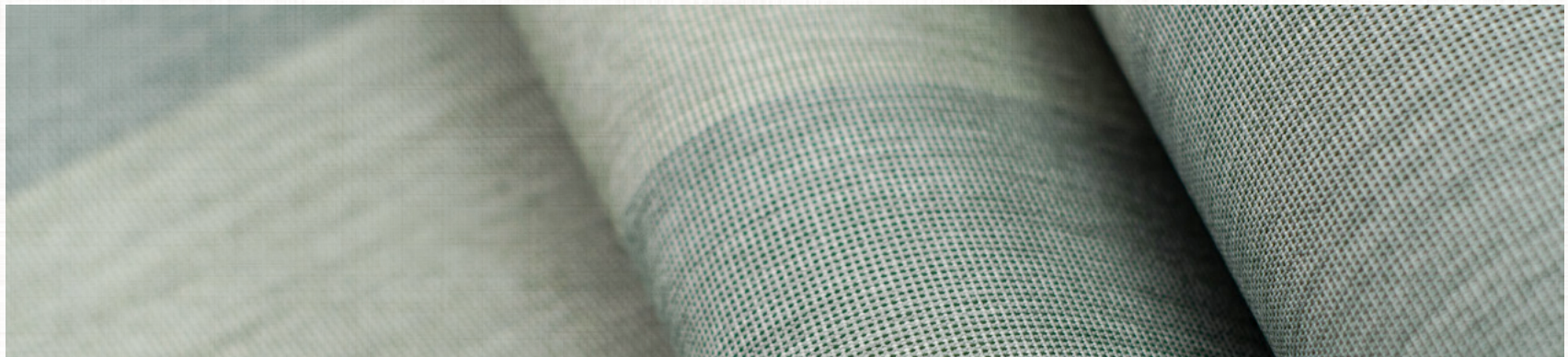
338674



320664



320666



RED/YELLOW FABRIC COLLECTION



314001



314763



338777



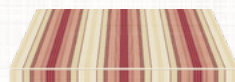
338779



320439



320186



323001



320458



320758



323042



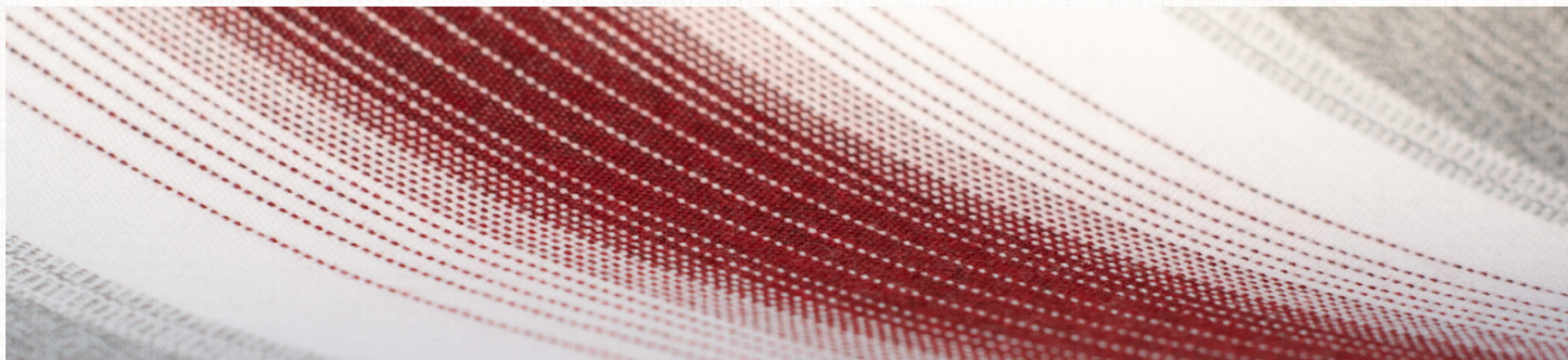
323041



320446



338657



WARRANTY & NATURAL PROPERTIES OF ACRYLIC FABRIC

LIMITED 10-YEAR WARRANTY: All of our acrylic fabrics are covered by a limited 10-year warranty against mildew, rot, and fading. Complete details are provided in warranty card upon installation.

Solution-dyed acrylic fabrics are high-performance, long lasting products which are manufactured under the highest standards of quality and precision. Solution dyeing means our colors are locked into the fibers so they can't wash out or run. Consequently, they resist fading from the sun, wind, and rain, remaining rich and vibrant. Our fabrics strongly resist mildew and rot. Plus, they will not harden, crack, or peel in the way vinyl can.

Utmost care of the fabric is taken in the cutting, sewing, handling, assembly, shipping, and installation. Because of the nature of some awning, screen, and shelter products, the process by which it is manufactured, and the type of fabric finish required because of environmental protection, the following properties may occur naturally to some extent in all acrylic fabrics. However, they do not affect the value, quality, usability, durability, or warranty of the product.

Crease Marks: This light discoloration of the fabric finish occurs when the fabric may be folded or gathered to accommodate proper fabrication. (See example below.) A marbling effect may also occur from gathering or bunching of the fabric. The discoloration may be more noticeable on solid colored fabrics and be more obvious when viewed in brighter light, such as sunlight.

Dimpling: This is a natural occurrence with awning products which require the fabric to be rolled onto a tube. When the fabric is rolled onto tubes, the sewn seams and hems are twice as thick as the fabric center. Single-layered center panels roll up tighter than the seams and hems, therefore creating dimpling next to the seams, hems, and fabric panel center. (See examples below.)



Crease Marks



Seam and Hem Dimpling



Center Panel Dimpling

Care and Cleaning: Acrylic Fabric should be cleaned regularly before substances such as dirt, roof particles, etc., are allowed to accumulate on and become embedded in the fabric, which could allow mildew to grow. The fabric can be cleaned without being removed from the installation. Simply brush off any loose dirt, roof particles, etc.; hose down and clean with a mild solution of natural soap in lukewarm water (no more than 100 degrees F.) Rinse thoroughly to remove soap. **DO NOT USE DETERGENTS.** Allow to air dry. Since acrylic fabrics receive a water repellent treatment, they can resist a light, short shower. For heavier, more persistent showers, though, the awning should be rolled up in order to prevent damage. Awning fabric which has been rolled up while wet should be unrolled to dry as soon as possible.

Sunesta®

AWNINGS & OUTDOOR COMFORT

FABRIC COLLECTION



www.sunesta.com

Sunesta 
AWNINGS & OUTDOOR COMFORT

 sunbrella®

20 NEW FABRIC STYLES. SAME TRUSTED PERFORMANCE.

Sunbrella shade fabrics enhance your outdoor space with worry-free, protective shading that lasts.

FADE & UV RESISTANT | SUPERIOR SUN PROTECTION | MOLD, MILDEW & STAIN RESISTANT

INDEX



BLUES / GREENS



334712



340809



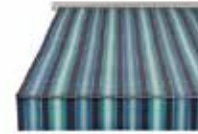
334626



334902



334993



334884



334806

GRAYS / BLACKS



334833



334662



334704



334988



335704



334703



334836

BEIGE / YELLOW



334709



334711



334713



334859



334954



335702